

Welcome!

While we're waiting for the meeting to start, there might be some awkward silence! If you'd like to, you can:

- **Share what do you think of when you think of a library? Share first three things that come to mind.**
- Get that last-minute tea, water, or snack!
- Kick back and relax. We'll start in a few minutes.

IFLS Trustee Webinar Series

Webinar II: Understanding the library
November 12, 2020



Introductions



WILS

Webinar series overview

November 5, 12-1: Understanding your role

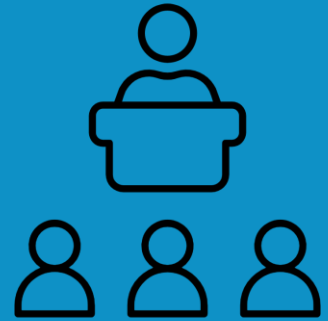
November 12, 12-1: Understanding the library

November 19, 12-1: Connecting the library and community

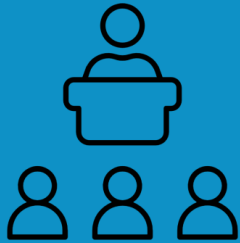
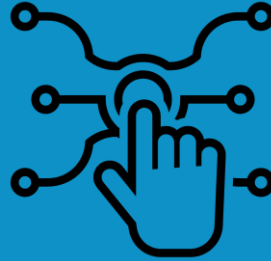
December 3, 7-8pm: Bringing it all together, a conversation



What do you think of when you think of a library?



What do library directors think of when they think of a library?



Reframing Roles

Literacy

Community Space

Lifelong Learning

Community Partners

Reframing Roles

Literacy

Community Space

Lifelong Learning

Community Partners

Reframing Roles

Literacy

Community Space

Lifelong Learning

Community Partners

Reframing Roles

Literacy

Community Space

Lifelong Learning

Community Partners

What Roles Do You See Changing At Your Library?

There are limits on what a library can be



“Servant Leaders seek to conceptualize challenges, thinking from a holistic and broad perspective. They dream big and use systemic thinking to approach day-to-day operations. Servant-Leaders are forward thinkers, seeking balance in the dream and daily life.”

-Robert Greenleaf

Board

Library
Staff

Library
Director

Foundation

Friends

County

LIBRARY



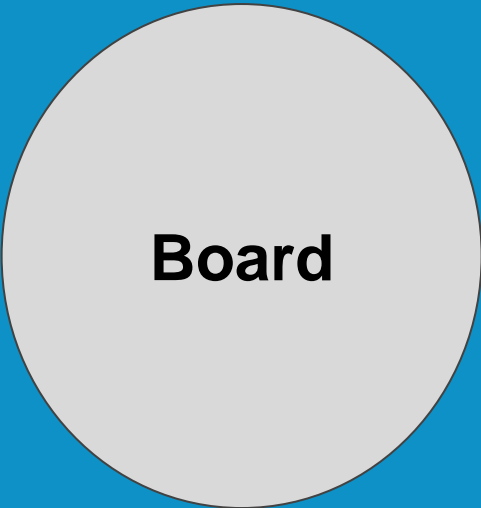
Library
System

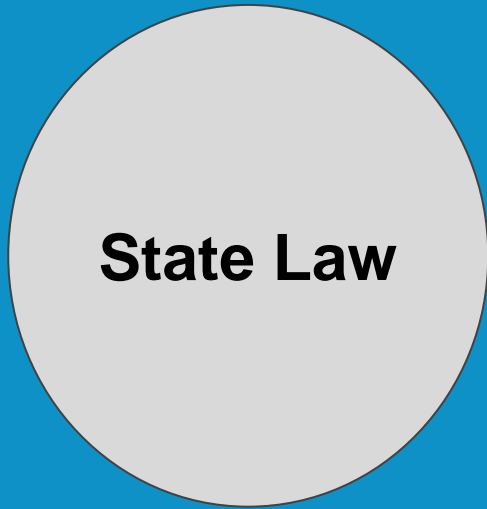
State Law

ECOSYSTEM

Community

Municipality





LIBRARY



ECOSYSTEM

Municipality

The library board shall have exclusive control of the expenditure of all moneys collected, donated or appropriated for the library fund... The library board also shall have exclusive charge, control and custody of all lands, buildings, money or other property devised, bequeathed, given or granted to, or otherwise acquired or leased by, the municipality for library purposes.

**Library
Staff**

**Library
Director**



LIBRARY

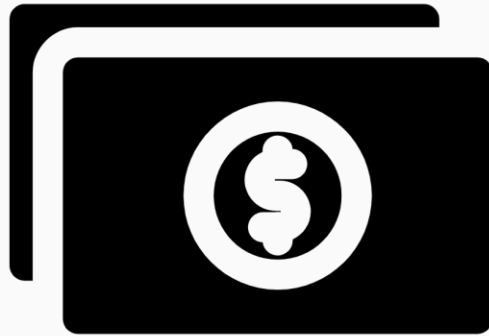


ECOSYSTEM

Community

WILS

Budget



IFLS Libraries have an...

Average Total Income of

\$381,515

Average Total Expenditure of

\$335,747



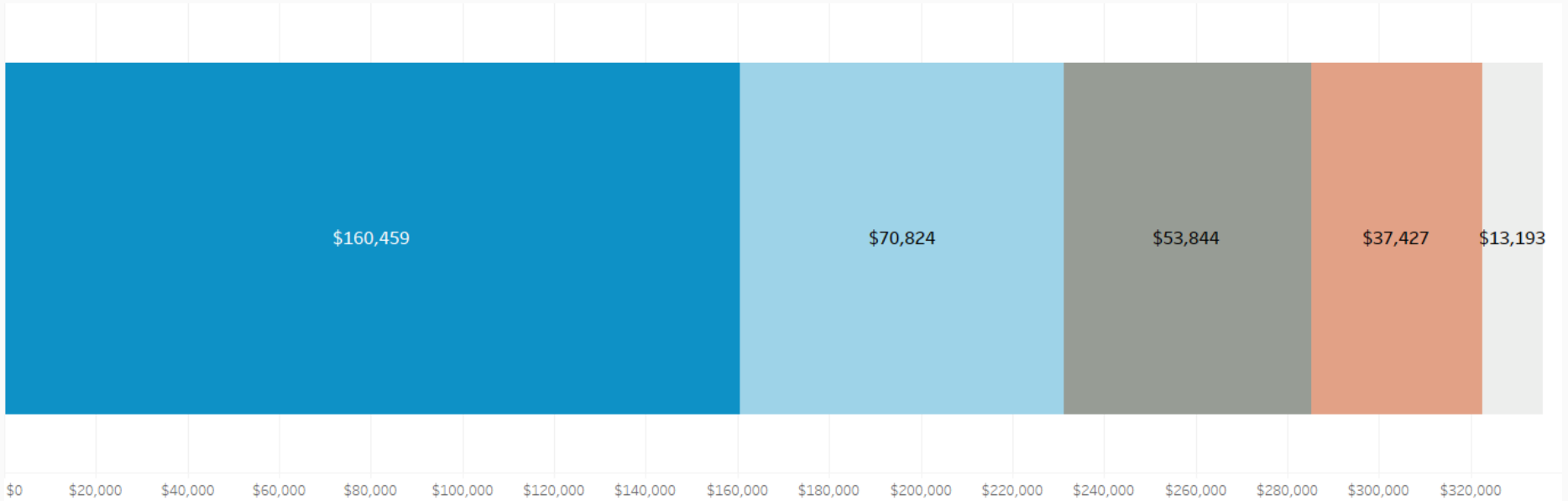
Average Income by Source



\$0 \$20,000 \$40,000 \$60,000 \$80,000 \$100,000 \$120,000 \$140,000 \$160,000 \$180,000 \$200,000 \$220,000 \$240,000 \$260,000 \$280,000 \$300,000 \$320,000 \$340,000 \$360,000 \$380,000

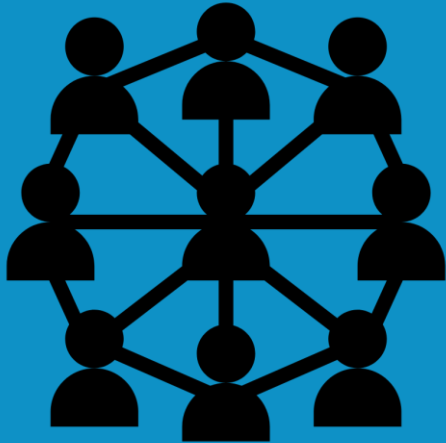
- Income Source
- Other County Payments
 - Other Income
 - Home County Appropriation
 - Municipal Appropriation

Average Expenditures by Item



- Expenditure
- Contracted Services
 - Library Materials
 - Employee Benefits
 - Other Operating Expenditures
 - Salaries & Wages

Communication and connection



- Practice
- Who are you talking with? What do they care about? How can you talk their language?

If nothing else...

- Understand the complexity of running a modern library
- Understand the big picture
- Share the vision, strength, and needs of the library



Resources

[Wisconsin Library Legislation and Funding, Law, Standards, Policies and Planning](#)

[Trustee Essentials: ByLaws](#)

[Professional Development Participation Research Study Report](#)

[State Statutes, Chapter 43](#)

[Chapter 43 outline \(from SCLS\)](#)

[County Library Funding FAQ](#)

Closing

- Homework: spend 5-10 minutes reflecting on what you learned today and write down at least one thing you can use to strengthen your role as a trustee at your library.
- Extra credit: Complete the Understanding My Library Services and Resources Worksheet
- Next webinar is November 19, 12-1: Connecting the library and community

Questions, comments? Reach out to Melissa McLimans at melissa@wils.org

