

# Welcome!

While we're waiting for the meeting to start, there might be some awkward silence! If you'd like to, you can:

- **Share in just a few words, what does it mean to be a strong community?**
- Get that last-minute tea, water, or snack!
- Kick back and relax. We'll start in a few minutes.



# IFLS Trustee Webinar Series

Webinar III: Connecting the library and community  
November 2020



# Introductions



# Webinar series overview

November 5, 12-1: Understanding your role

November 12, 12-1: Understanding the library

**November 19, 12-1: Connecting the library and community**

December 3, 7-8pm: Bringing it all together, a conversation



# Tell us...

- In just a few words: what does it mean to be a strong community?

What is community?



What is a network?



# The Community Needs the Library

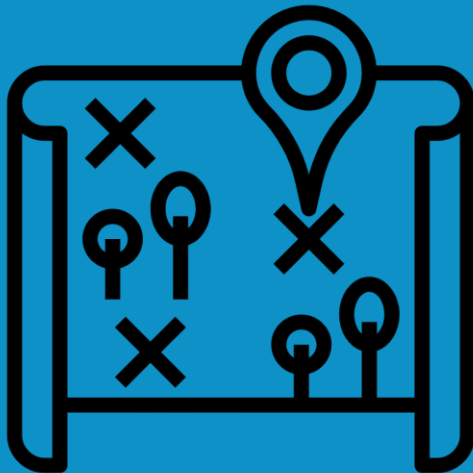




# The Library Needs the Community



# Your Library, Mapped



Saying "yes"  
 e.g. Mike refer - call the library

Account Popcorn Jakes - meet annually  
 K-12 LIBRARY COMMUNITY MAP TEMPLATE

Society for children's Book Unit's SCW ±  
 meet annually

READ poster models

early childhood  
 different franchises esp. women  
 N. American  
 Hispanic people  
 Chinese people  
 home schoolers

Co plays

St. John's  
 Emmanuel Lutheran  
 Methodist Church

FAITH COMMUNITY

Countrywide Photography  
 D.Q. Landmark

Doxbee's  
 Don's Jewelry Market

SB's  
 Subway  
 Chinese Restaurant  
 Meridian Restaurant

BUSINESS COMMUNITY

SPECIFIC POPULATIONS IN COMMUNITY

FMPPL  
 Board of Trustees

LIBRARY GROUPS  
 (FRIENDS, FOUNDATIONS, ETC.)

WILS  
 WLA  
 MFA

Staff who are participatory in their own organization  
 People who started or founded - that's best!

LOCAL GOVERNMENT AND AGENCIES

Mayor's City Clerk  
 City Council  
 Public Property Committee  
 Community 2000  
 other city employees  
 Firefighters  
 Police  
 Rescue  
 Dan Jack  
 John Schren

Reading Group  
 Library

PUBLIC LIBRARY

Nebraska  
 Authors  
 Forum

Outyganic Camp Leadership  
 Storytime patrons  
 Faculty/meeting space users  
 State Leadership

Federal Leadership

WIDER LOCAL COMMUNITY (PEOPLE, NON-PROFITS & OTHER COMMUNITY GROUPS)

• Lions Club  
 • Seymour women's club  
 • HOH

ACN - local newspaper

2 other book clubs  
 ± participate in

Physical neighbors of the library  
 Women and people who have main street

OTHER LIBRARY ORGS

LOCAL ACADEMIC AND K-12 INSTITUTIONS

Alternative High School - Lynn Buchmann

Pete Ross, superintendent  
 Reta, principal  
 Samie, principal  
 Tom Moeller - m.c. / parent col!

School admin assistants

Someone to meet  
 School nurse  
 Michelle Phares  
 Llama Farm

Girl Scouts  
 Boy Scouts

iSLP!  
 Research and Lead

Headstart

4K / GS

4K / Rockledge

Vendors are connected

Cellcom: the best + tech sharp and technology first.

Good Shepherd  
 CFRC  
 Museum

Farm Technology Days - Outyganic Camp

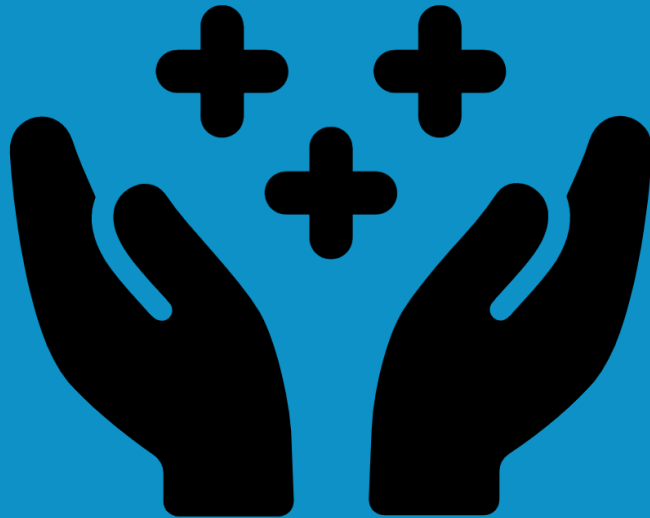
# Tell us...

- Where are there strong connections on your library's map?

# Networks

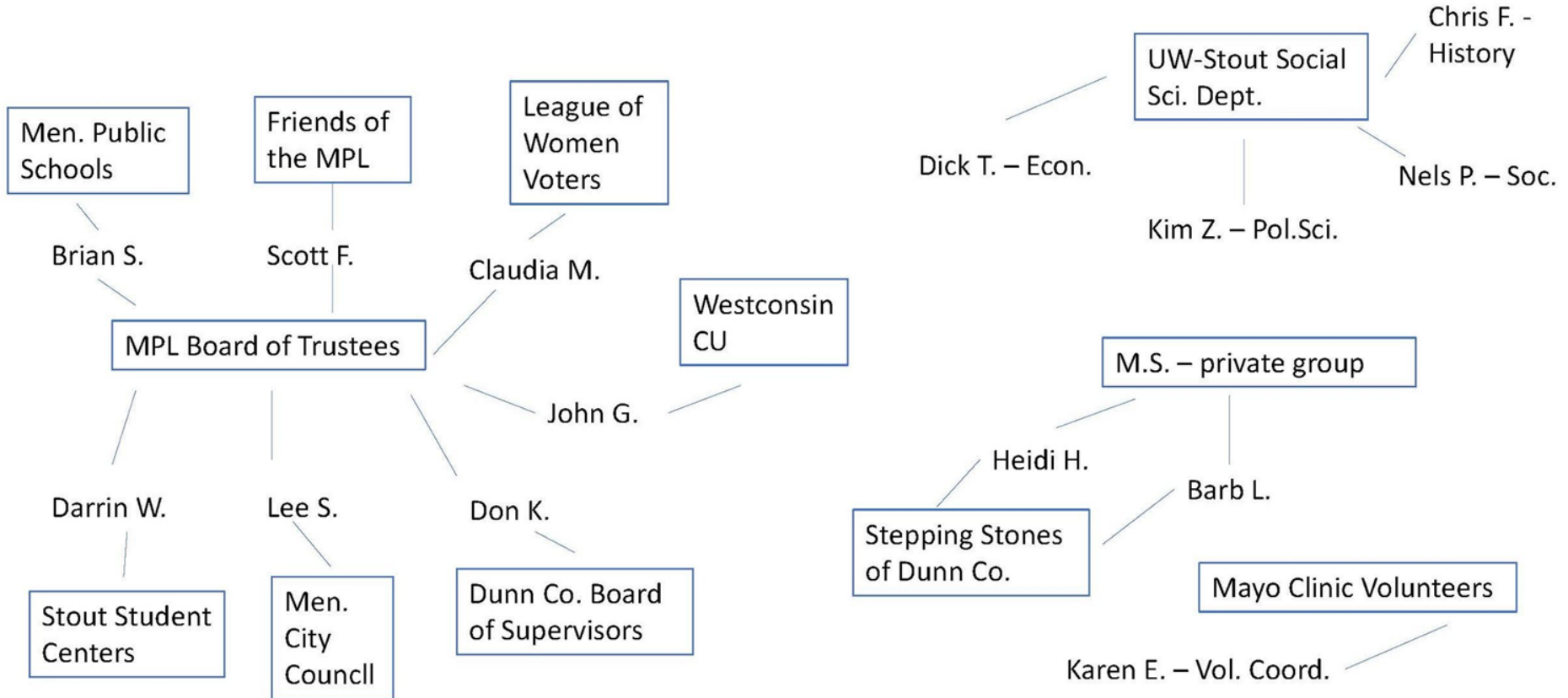


# The value of your network



# Network mapping

# Mapping Exercise - dm





# Community and network mapping around an idea/need/topic

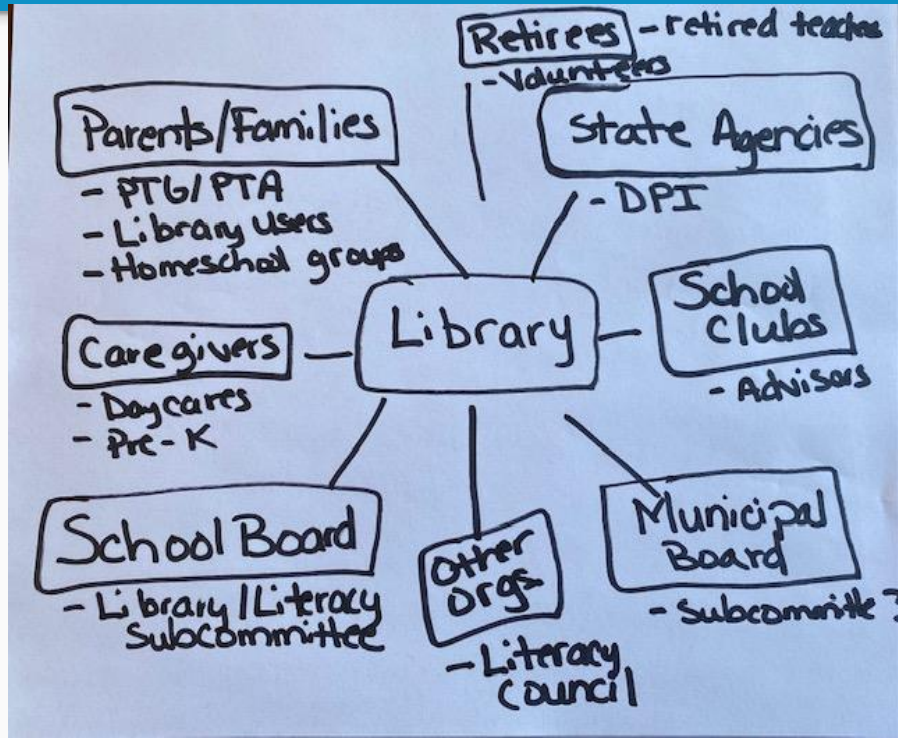


# The situation

Our community does not have a school media specialist or a children's librarian at the public library.

Our objective, as a public library, is to find a way to work together with the school to improve children's literacy.

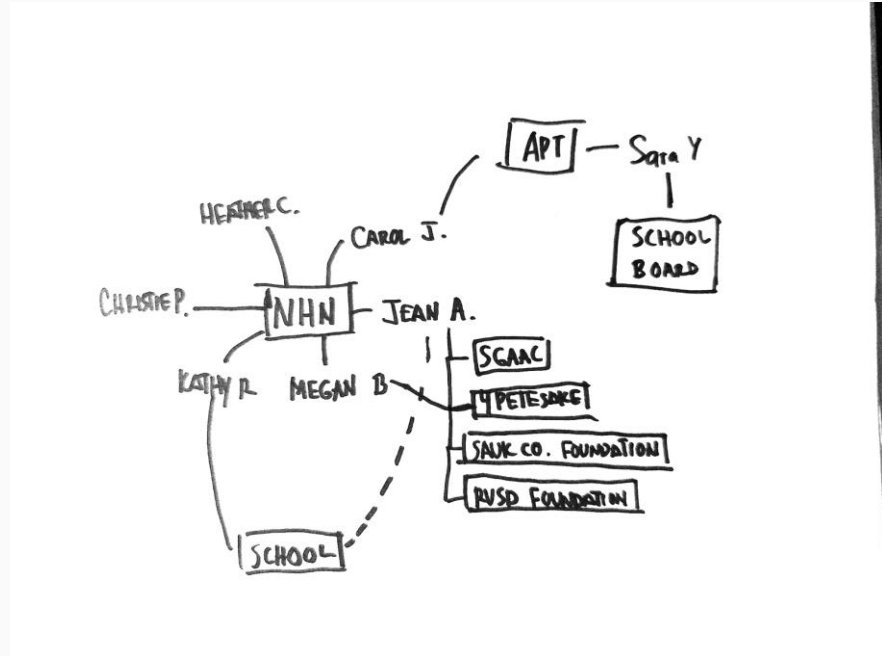
# Step 1: Look at the library's community map



# Step 2: Brainstorm individuals

Step 1:

- DPI
- School board
- Municipal board



# Step 3: Plan

## Step 1 & Step 2

- DPI
  - Director knows Ben
- School board
  - I know Sarah
  - Melissa knows Fred
  - Leah knows Sam
- Municipal board
  - Robin knows everyone (she's on the board)
- Retired teachers
  - I know Jean A
- Bookstore manager
  - Robin knows her



Plan

# Supporting your director in the community

- Know the library
- Know the community
- Serve and lead



If nothing else...



Understand that your role of **trustee** is an important one that brings the **library** together with the **community**.

- [Libraries Transforming Communities](#)
- [Administrative Essentials: A Handbook for Wisconsin Public Library Directors](#)
- [BoardSource](#)



# Closing

- Homework: spend 5-10 minutes reflecting on what you learned today and write down at least one thing you can use to strengthen your role as a trustee at your library.
  - Extra credit: Complete a Network Map of your own
- Next webinar is December 3, 7-8 PM: Bringing it all together, a conversation
- Thank you for your time and energy!

*Questions, comments? Reach out to Melissa McLimans at [melissa@wils.org](mailto:melissa@wils.org)*

